

TAKARA
TOMY

BEYBLADE X

バイブレードエックス



X-perience the Xtreme speed —

START DASH GUIDE

BEYBLADE goes to the next stage.

BEYBLADE is a type of sport. Skateboarding has been added to the Olympic program in recent years. Games also brought a huge change to the sports industry. The definition of sports keeps changing but it can always stimulate our senses.

BEYBLADE X

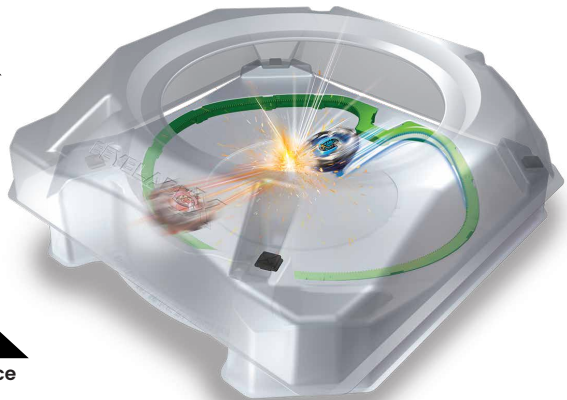
It is a sport-oriented Beyblade. The gears are sharp enough to disrupt your heartbeat. The competition begins after the moment of shootout the Beyblade. The blood in the body is throbbing with victory. Beyond over 20 years of evolution, how far can we go from now on? It's been a far future coming, let's get started.

BEYBLADE X

バイブレードエックス

A gear sport that unfolds extreme battle with super acceleration by the new gimmick [X Dash]. Let's start the battle with signal of "3.2.1 Go Shoot".

3.2.1 Go Shoot



3 layers structure of Beyblade

The Beyblade consists of 3 parts, and the performance changes depending on the combination.



Blade

The main part of the Bey that collide directly with the opponents. Performance varies depending on its shape and weight.



Ratchet

The middle-layer of the Bey that determine the Bey's movement, balance of the center of gravity and how the Bey collide.



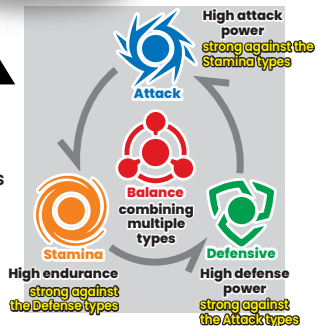
Bit

The shaft tip part determines the movement of the Beyblade. Dash performance and burst resistance are depending on the type of bit.

Types Compatibility

Each type of Bey has different advantages and disadvantages.

*The type of Beyblade is determined by the type of Bit it used.





Get serious.

GEAR SPORTS

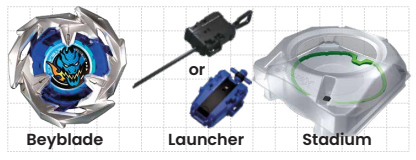
BEYBLADE X

ベイブレードエックス



How to shoot

Necessary items



STEP 1

Place the Beyblade on launcher



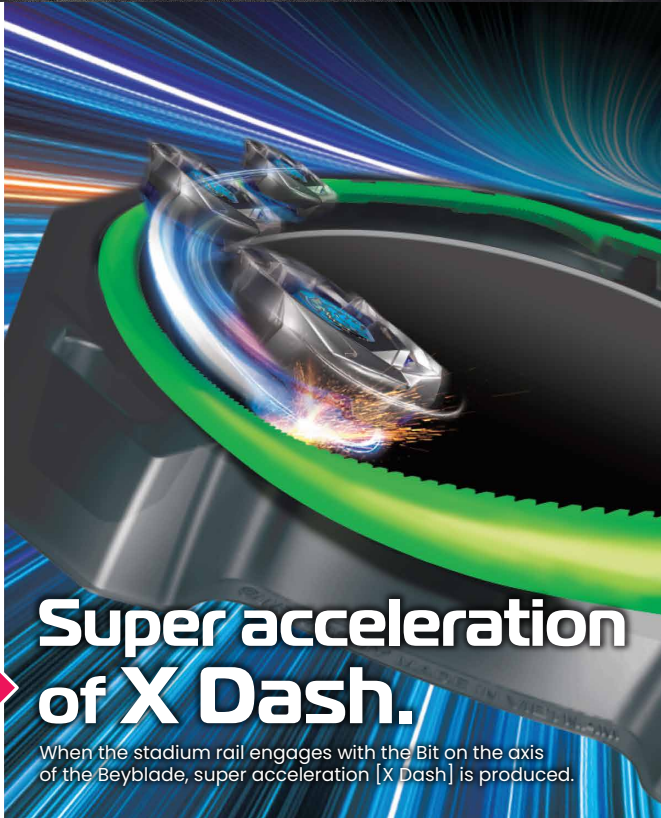
STEP 2

Hold the launcher above the stadium



STEP 3

Pull the winder or string to shoot the Beyblade



Super acceleration of X Dash.

When the stadium rail engages with the Bit on the axis of the Beyblade, super acceleration [X Dash] is produced.

How to win

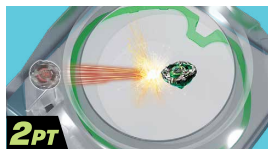
There are **4 ways** to get the points, the first to **score 4 points** shall be declared winner of the match.



Spin finish
Spin longer than your opponent's Bey.



Burst finish
Attack and break your opponent's Bey.



Over Finish
Attack opponent's Bey to enter the Over Zone.



B4 Store Event



B4 (BEYBLADE BATTLE BASE)
The authorized stores that hold the Beyblade events around the world.

What is B4 Store Event:

An authorized store that holds the Beyblade X trial sessions and official tournaments, winner can get the special prizes.



Scan the QR code to Beyblade X page for more detailed information.

G3 Tournament Prize



※All images are reference only
 ※Please note that prizes will vary depending on the period, store, region, etc.

Higher Level of Tournaments

There are a few different levels of major tournaments. Let's aim for higher-ranking competitions and further hone our skills!

※Please note that prizes will vary depending on the tournaments.



Held by
B4 Stores



About BEYBLADE Type

Attack Type



DRANSWORD 3-60F



Dash attack

With a bit of excellent dash performance and a blade with high attack power, it can achieve a powerful X dash.



Blade **DRANSWORD**



Excellent at flipping the opponent's Bey diagonally upwards with 3 uppercuts.

Ratchet **3-60**



The part that set the Bey low. Adopts 3 blades with high repelling performance.



Bit **F (Flat)**



The flat tip of the axis makes the Bey easier to produce the X-dash.

Balance Type



HELLSCYTHE 4-60T



Combining attack with defense

Combining parts with the good balance of attack and defense that improves your ability to repel different opponents.



Blade **HELLSCYTHE**



Excellent at breaking the opponent's Bey with 4 blades.

Ratchet **4-60**



The part that set the bay low. Adopts 4 blades that easily evade attacks.

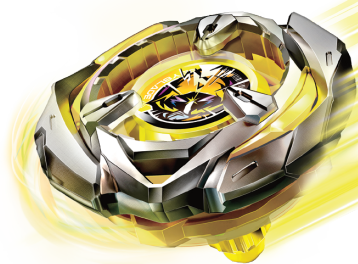


Bit **T (Taper)**



The narrowed bit of the axis allows for both early attack power and late-game stamina.

Stamina Type



WIZARDARROW 4-80B



Centrifugal force endurance

The Bey that generates strong centrifugal force and the bit with high durability, it is excellent at spinning for a long time.



Blade **WIZARDARROW**



Designed with an outer center of gravity that generates strong centrifugal force with two large circular blades.

Ratchet **4-80**



Parts that set the Bey high. Use 4 blades to easily evade attacks.



Bit **B (Ball)**



The spherical bit of the axis allows the Bey to evade attacks with just the right amount of movement and achieves high stamina.

Defensive Type



KNIGHTSHIELD 3-80N



Shock absorbs protection

The Bey can absorb impact and its bit makes it easier to stay in the center of the stadium and makes it difficult to be repelled by the opponent's Bey.



Blade **KNIGHTSHIELD**



Adopts a damper structure that easily absorbs shock with 6 pieces of protection.

Ratchet **3-80**



The part that set the Bey high. Adopts 3 blades with high repelling performance.



Bit **N (Needle)**



The sharp bit of the axis tilts and improves counter-performance.

Starters



BX-01 STARTER
DRAN SWORD 3-60F



BX-02 STARTER
HELLS SCYTHE 4-60T



BX-03 STARTER
WIZARD ARROW 4-80B



BX-04 STARTER
KNIGHT SHIELD 3-80N



BX-15 STARTER
LEON CLAW 5-60P

Boosters



BX-00 BOOSTER
DRANZERSPIRAL 3-80T



BX-05 BOOSTER
WIZARD ARROW 4-80B



BX-06 BOOSTER
KNIGHT SHIELD 3-80N



BX-13 BOOSTER
KNIGHT LANCE 4-80HN



BX-14 RANDOM BOOSTER VOL.1



BX-16 RANDOM BOOSTER VIPERTAIL SELECT



BX-19 BOOSTER
RHINOHORN 3-80S

Accessories



BX-09 BEY BATTLE PASS



BX-10 XTREME STADIUM



BX-11 LAUNCHER GRIP



BX-12 3 ON 3 DECK CASE



BX-18 STRING LAUNCHER

Sets



BX-07 START DASH SET



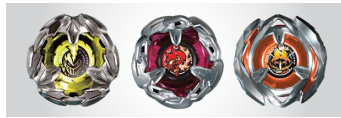
BX-17 BATTLE ENTRY SET



BX-08 3 ON 3 DECK SET



BX-20 DRANDAGGER DECK SET



BX-21 HELLSCHAIN DECK SET

And more...



BEYBLADE Road to 25th



takaratomyasia.com



TAKARATOMY ASIA

